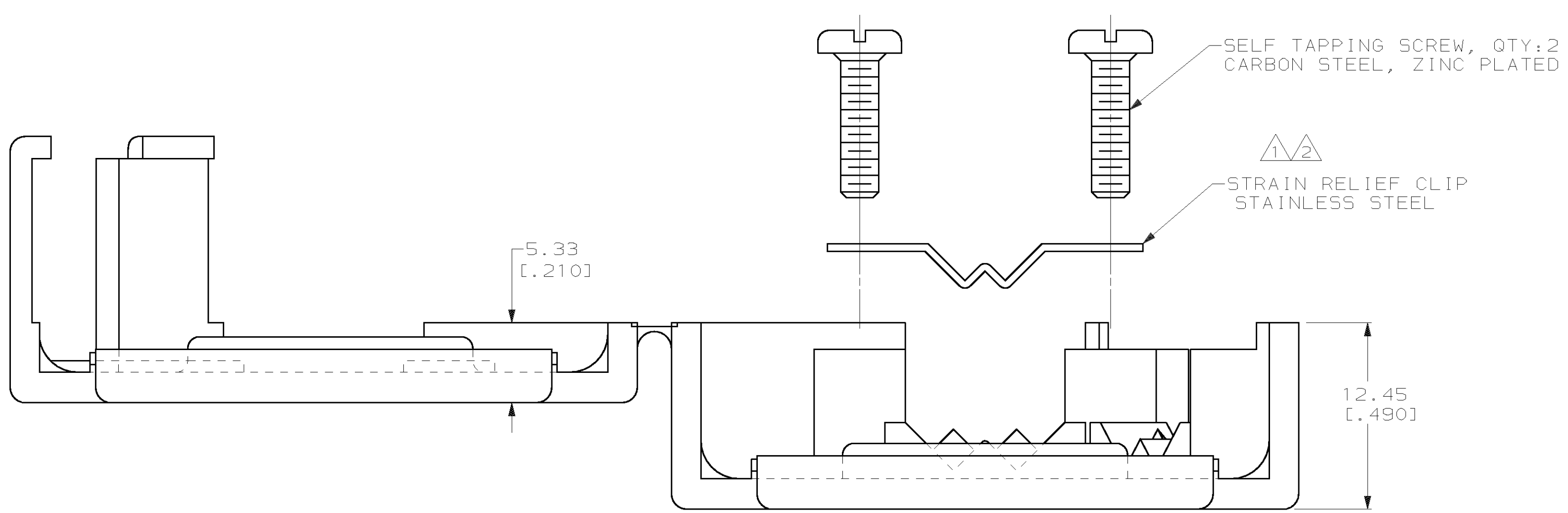
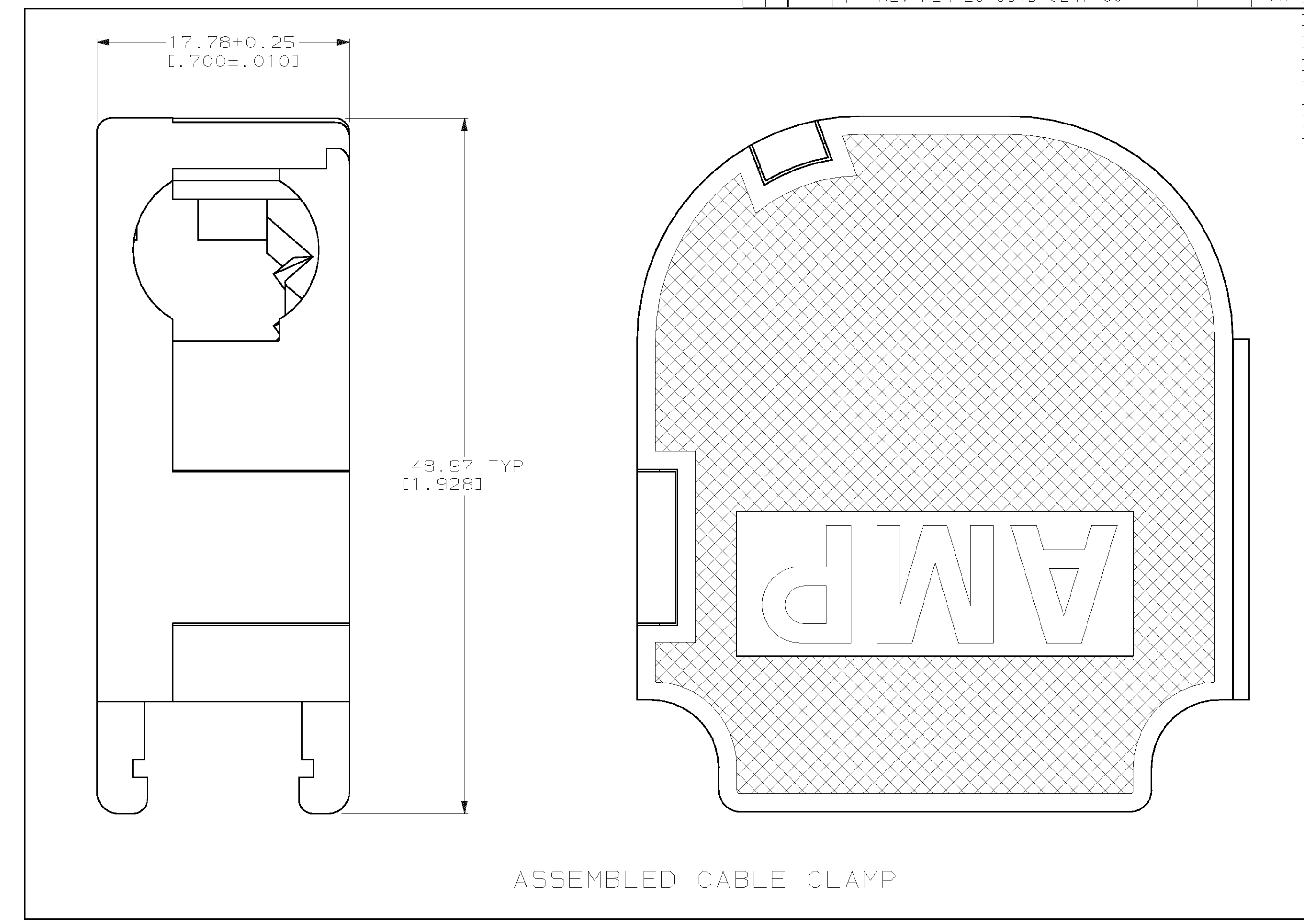
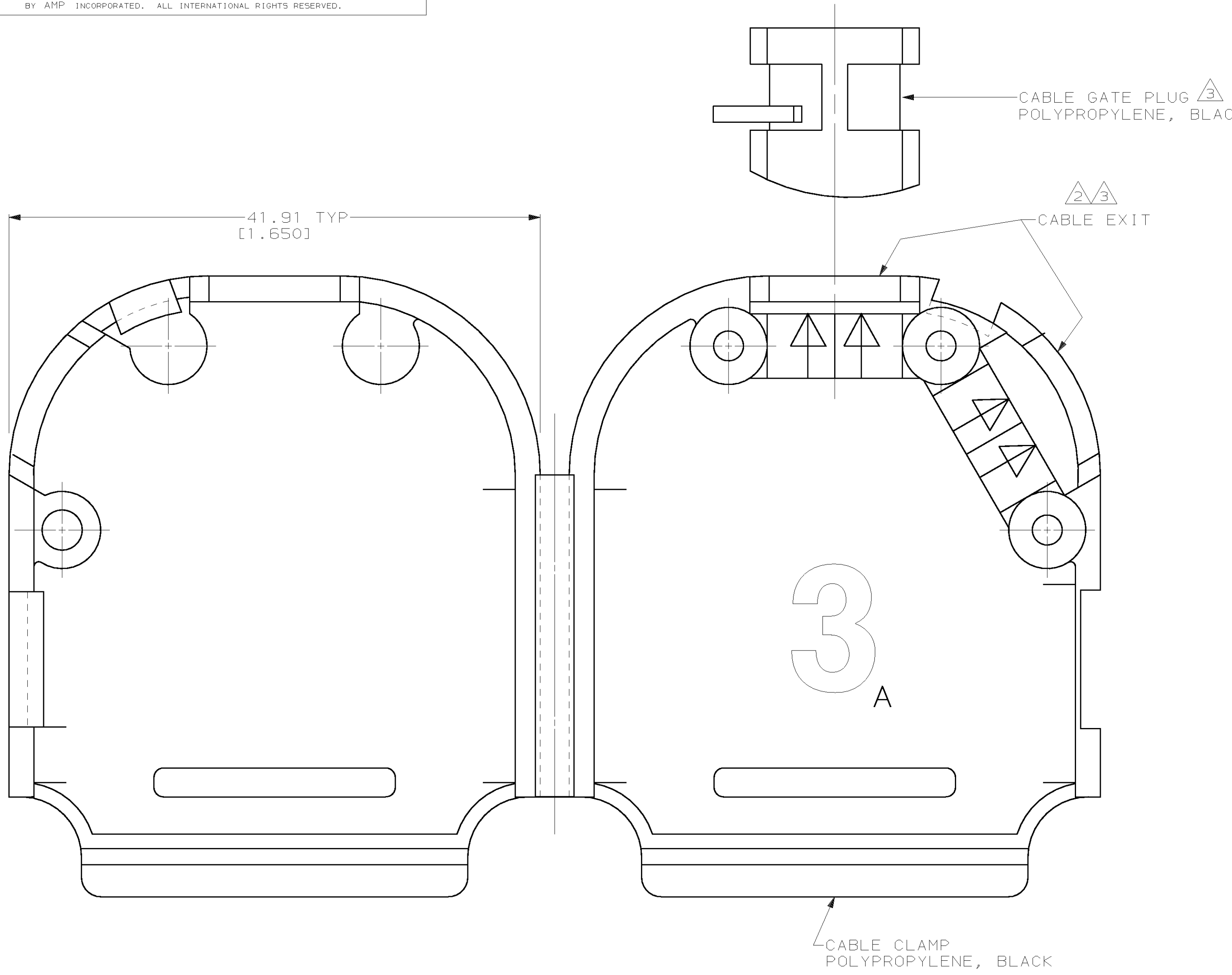


LOC		DIST		REV		REVISIONS			
GP	00	P	F	ZONE	LTR	DESCRIPTION	DATE	APPD	
					O	RELEASED	NPR2706	2-11-90	-
					A	REV PER ECN	BD4220	07/30/90	JW
					B	REV PER ECN	BD4313	10/03/90	JW
					C	REVISED PER ECN	BD5892	02/26/92	RM
					D	REV PER ECN	BD5736	08/26/92	RM
					E	REV PER EC	0020-1343-93	11/17/93	SB
					F	REV PER EC	OU1D-0247-00	16 JAN 02	JR



- 1 CLIP CAN BE INSTALLED AS SHOWN FOR SMALL DIAMETER CABLE, OR REVERSED FOR LARGE DIAMETER CABLE.
- 2 CLIP MAY BE USED AT EITHER CABLE EXIT.
- 3 CABLE GATE PLUG TO BE PLACED IN CABLE EXIT NOT BEING USED.
- 4. CABLE DIAMETER RANGE = 4.57-11.68 [0.180-.460].

OBSELETE	BULK PACKED	750078-2
	UNIT KIT	750078-1
	PACKAGING	PART NO

DO NOT SCALE PRINT. UNLESS SPECIFIED DIMENSIONS IN mm [INCHES] TOLERANCES ON:	DR 2-11-90 J McCLINTON	NAME CABLE CLAMP KIT, UNASSEMBLED, SIZE 3, QUICK-SNAP, 120° & 180° CABLE EXIT, AMPLIMITE™
2 PLC DEC ±	CHK 2-14-90 R. STONE	
3 PLC DEC ±0.13[0.005]	APPD 2-16-90 J. WESTMAN	SIZE D 00779
ANGLES ±	APPD 2-16-90 J. ASSINI	
MATERIAL	PRODUCT SPEC	CAGE CODE 00779
SEE CALLOUTS	APPLICATION SPEC	DRAWING NO 750078
SEE CALLOUTS	WEIGHT	SCALE 4:1
		SHEET 1 OF 1